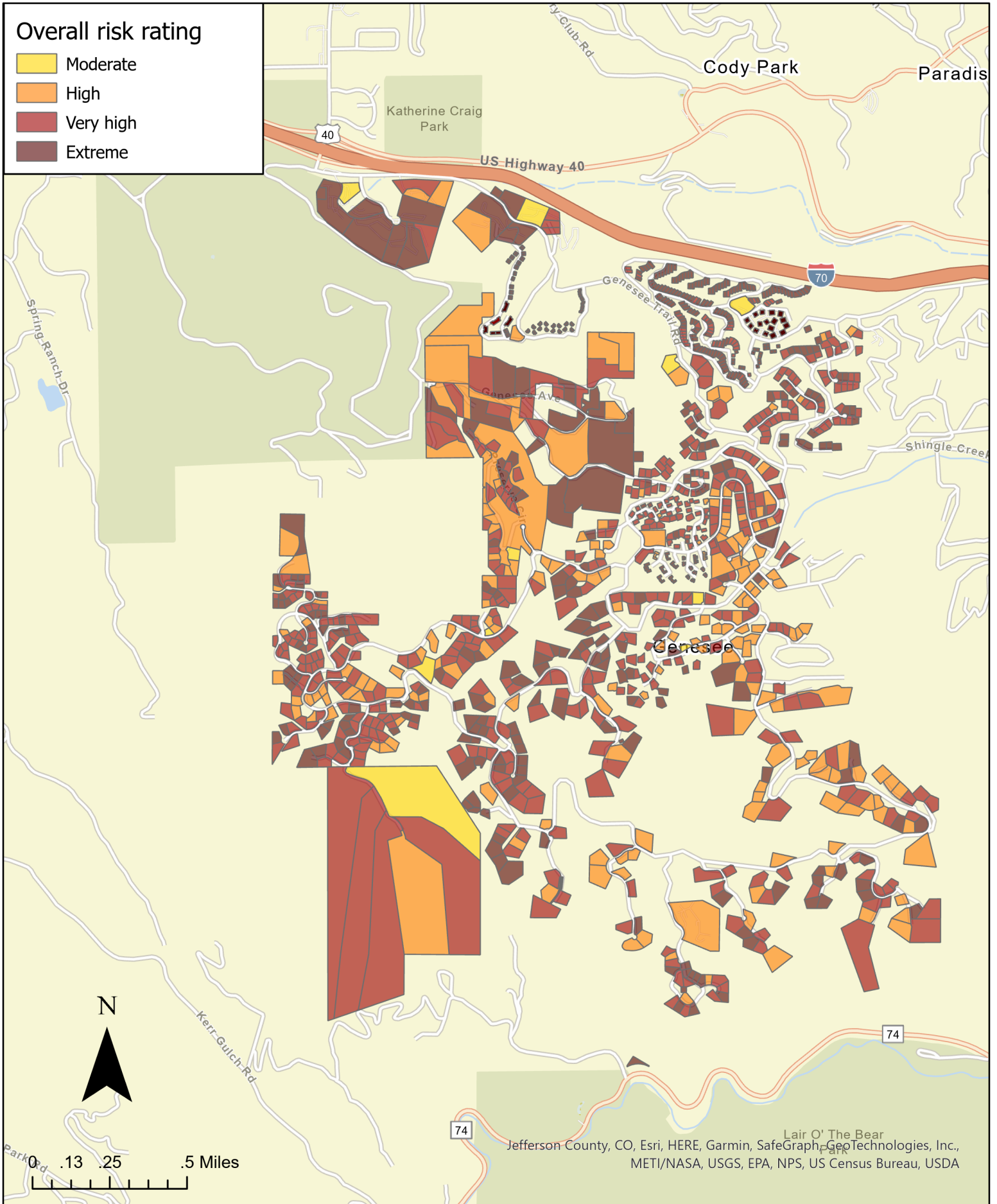


Overall risk rating

- Moderate
- High
- Very high
- Extreme

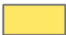




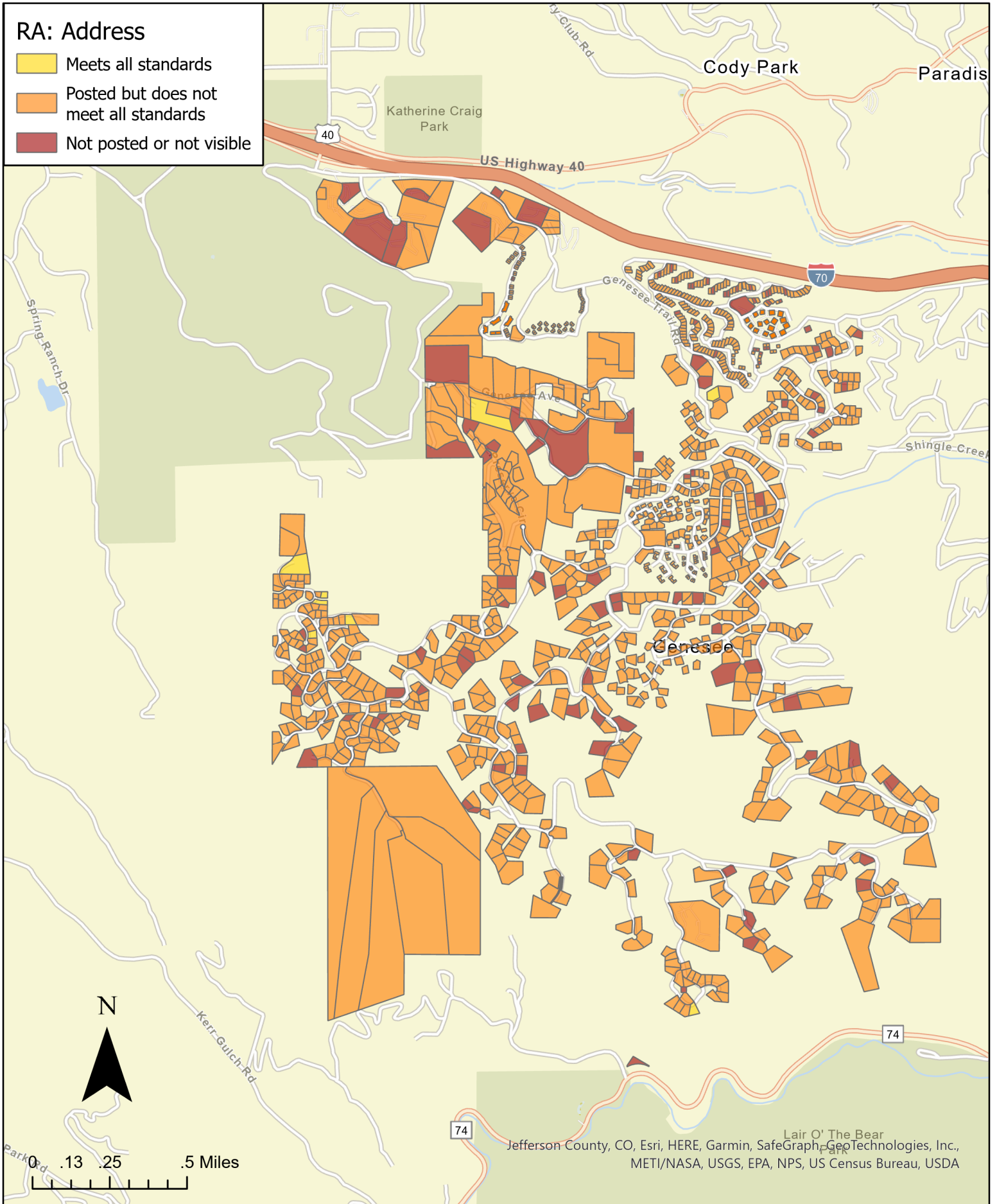
Jefferson County, CO, Esri, HERE, Garmin, SafeGraph, GeoTechnologies, Inc., METI/NASA, USGS, EPA, NPS, US Census Bureau, USDA



WiRē + Genesee Fire Rescue
Data collected in 2021
Map produced by The Wildfire Research Center (WiRē)

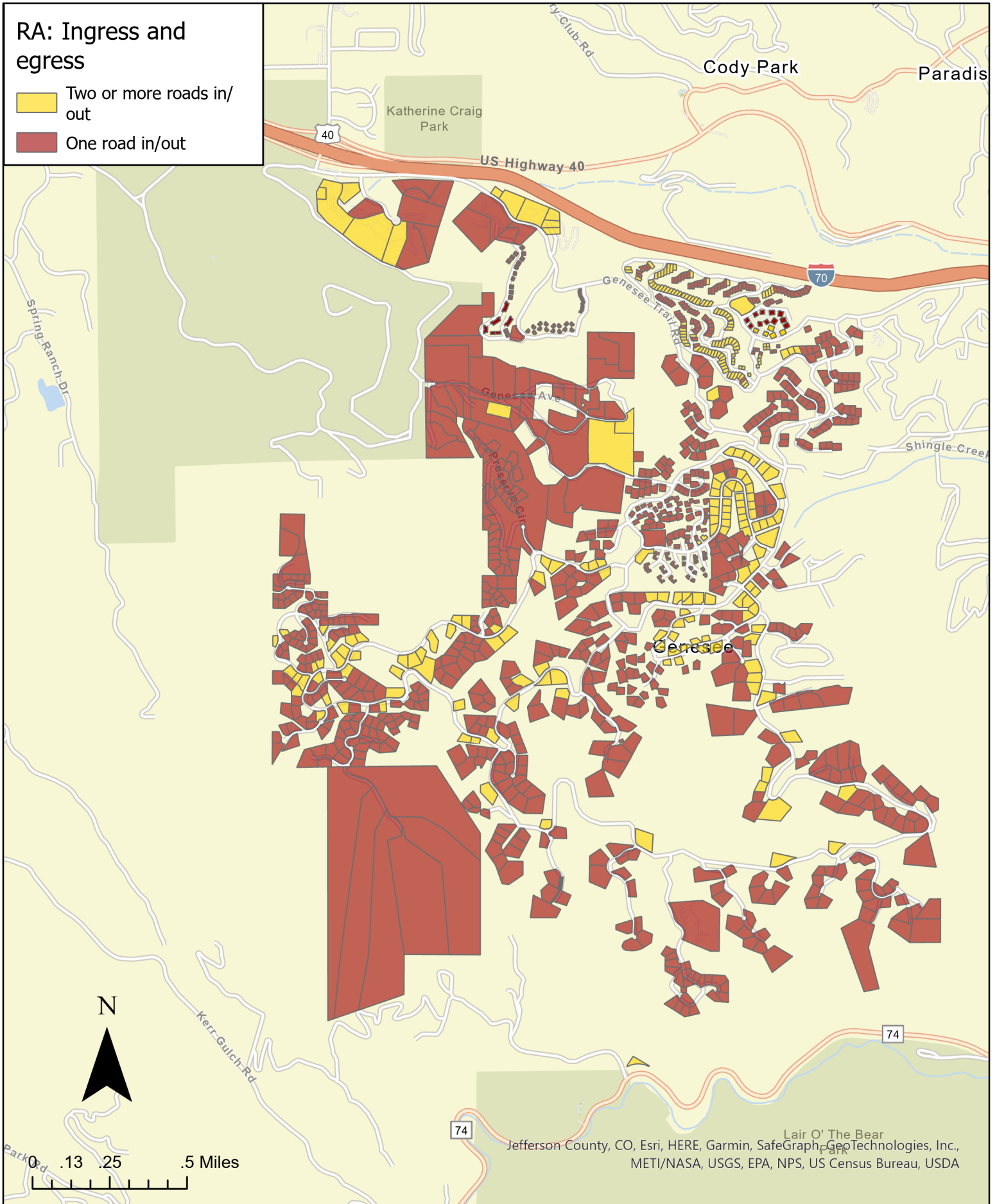
RA: Address

-  Meets all standards
-  Posted but does not meet all standards
-  Not posted or not visible



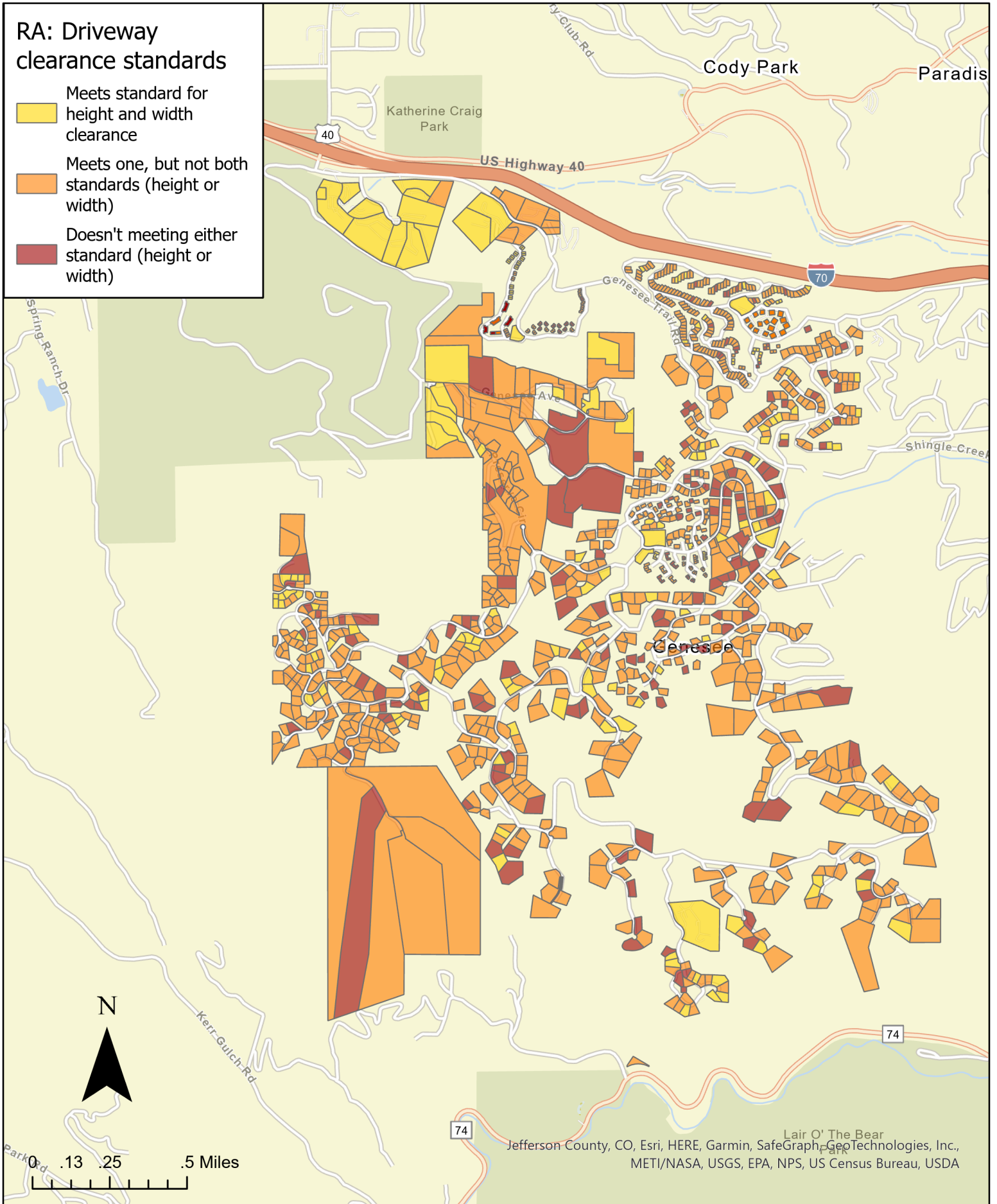
RA: Ingress and egress

- Two or more roads in/out
- One road in/out



RA: Driveway clearance standards

- Meets standard for height and width clearance
- Meets one, but not both standards (height or width)
- Doesn't meeting either standard (height or width)

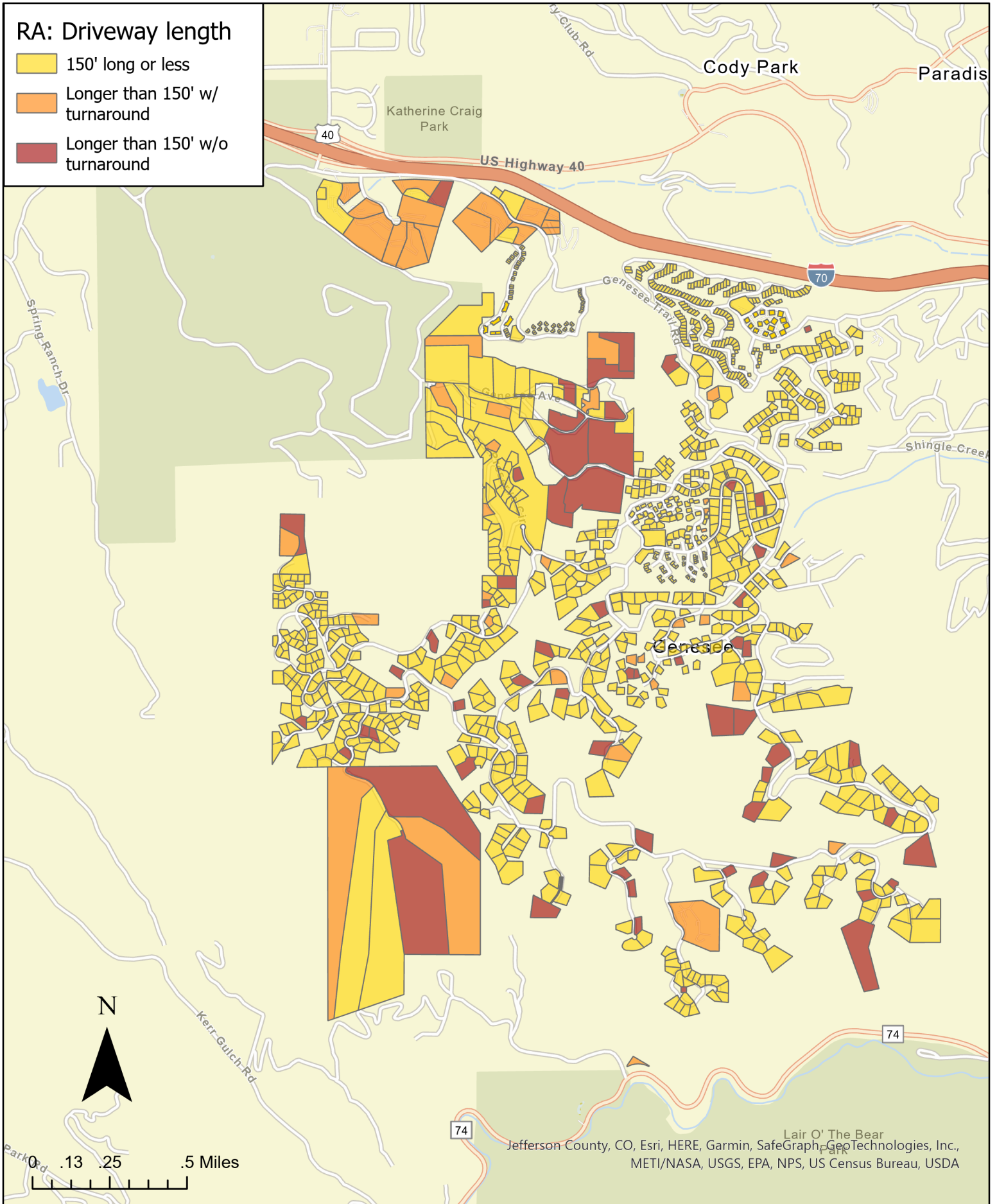


Jefferson County, CO, Esri, HERE, Garmin, SafeGraph, GeoTechnologies, Inc., METI/NASA, USGS, EPA, NPS, US Census Bureau, USDA



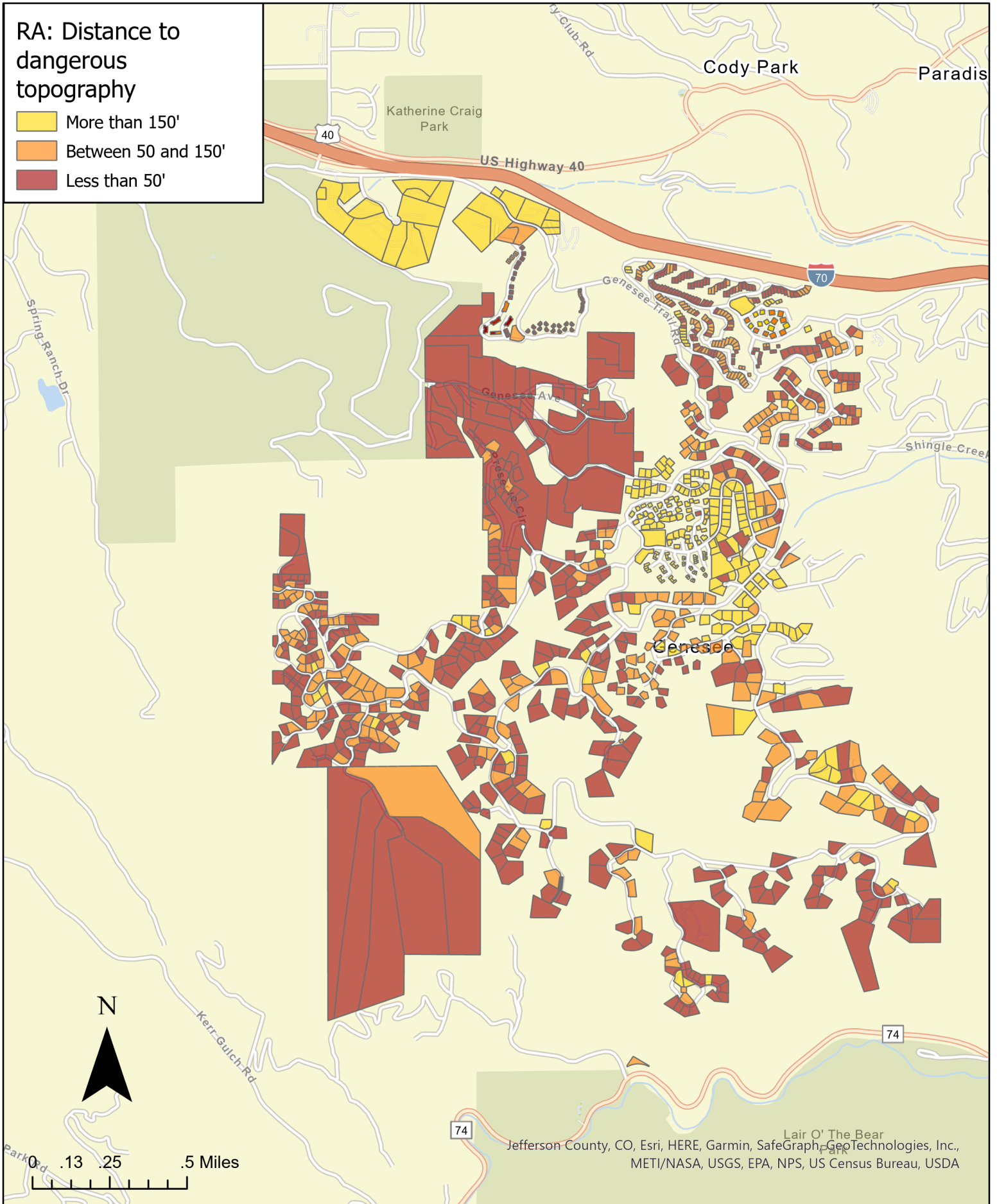
RA: Driveway length

- 150' long or less
- Longer than 150' w/ turnaround
- Longer than 150' w/o turnaround



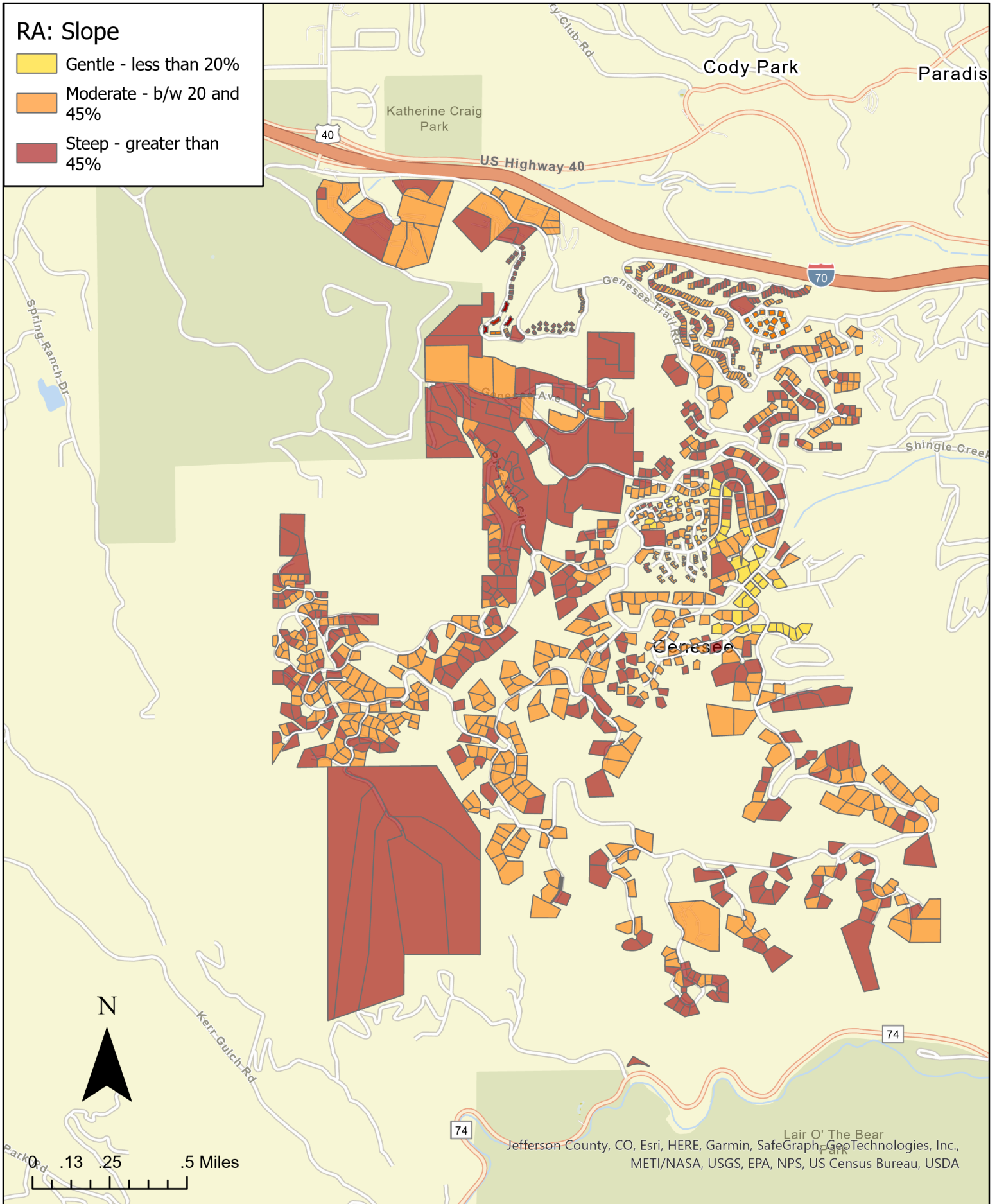
RA: Distance to dangerous topography

- More than 150'
- Between 50 and 150'
- Less than 50'



RA: Slope




- Gentle - less than 20%
- Moderate - b/w 20 and 45%
- Steep - greater than 45%

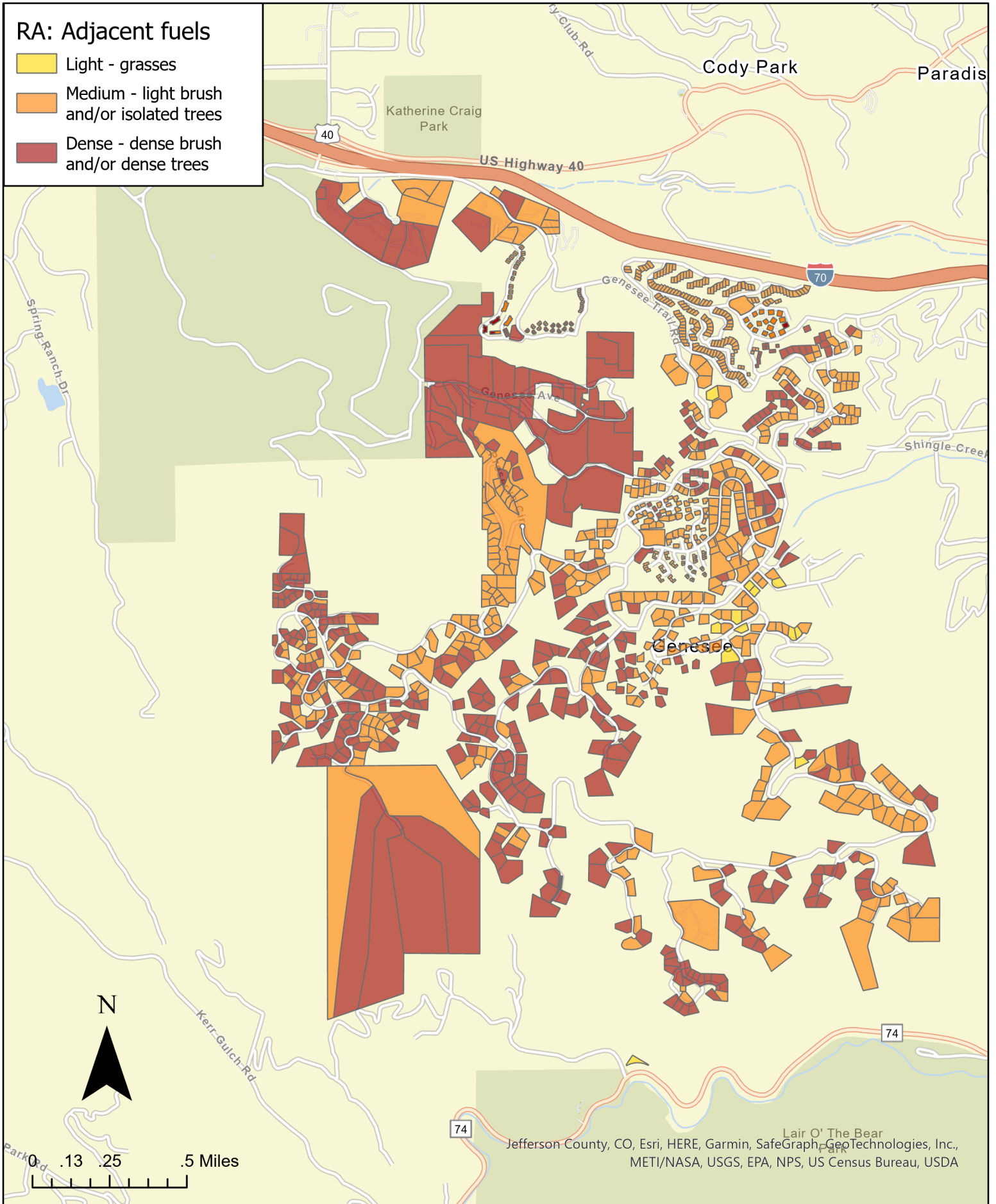


Jefferson County, CO, Esri, HERE, Garmin, SafeGraph, GeoTechnologies, Inc., METI/NASA, USGS, EPA, NPS, US Census Bureau, USDA



RA: Adjacent fuels

-  Light - grasses
-  Medium - light brush and/or isolated trees
-  Dense - dense brush and/or dense trees

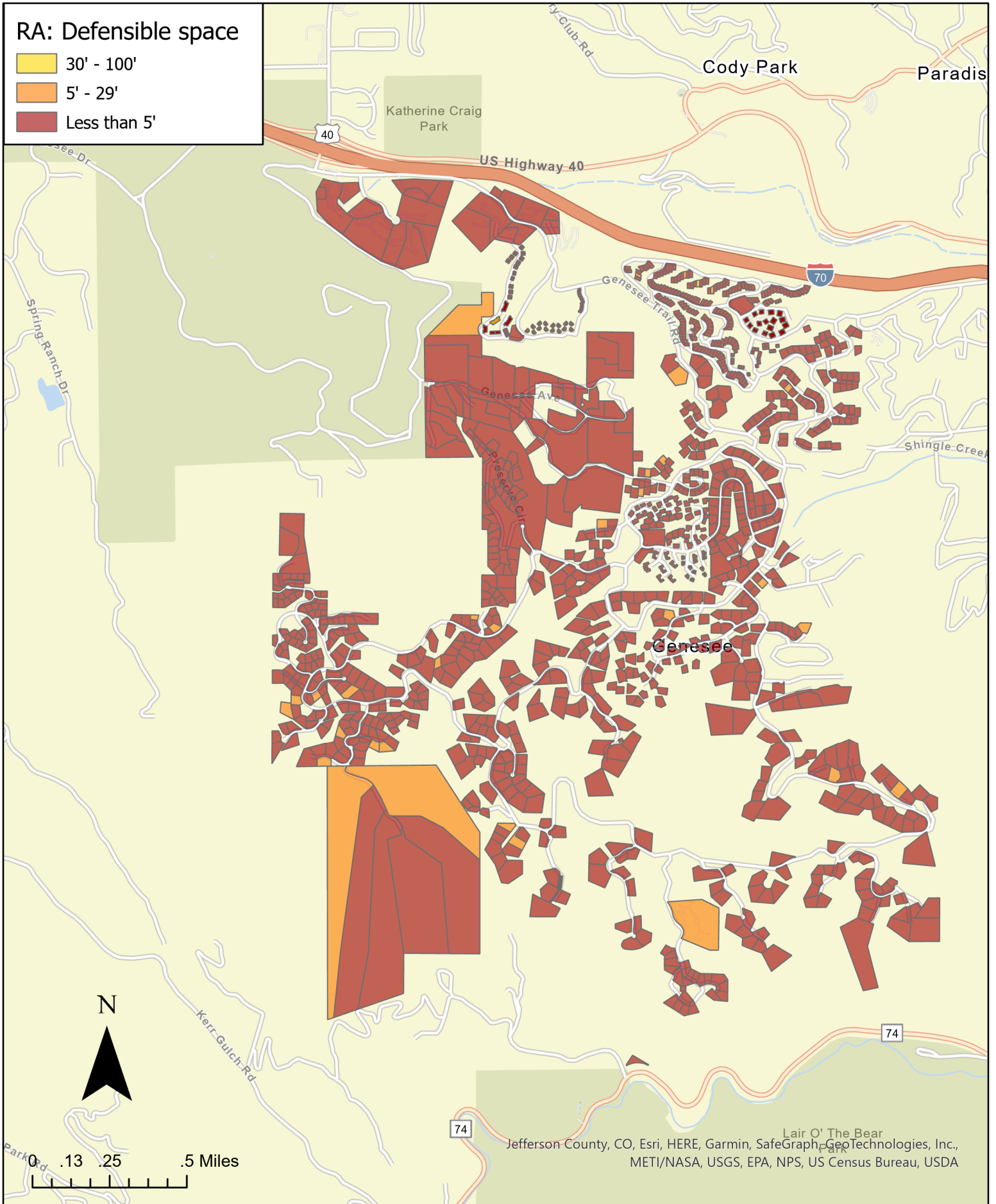


RA: Defensible space

30' - 100'

5' - 29'




Less than 5'

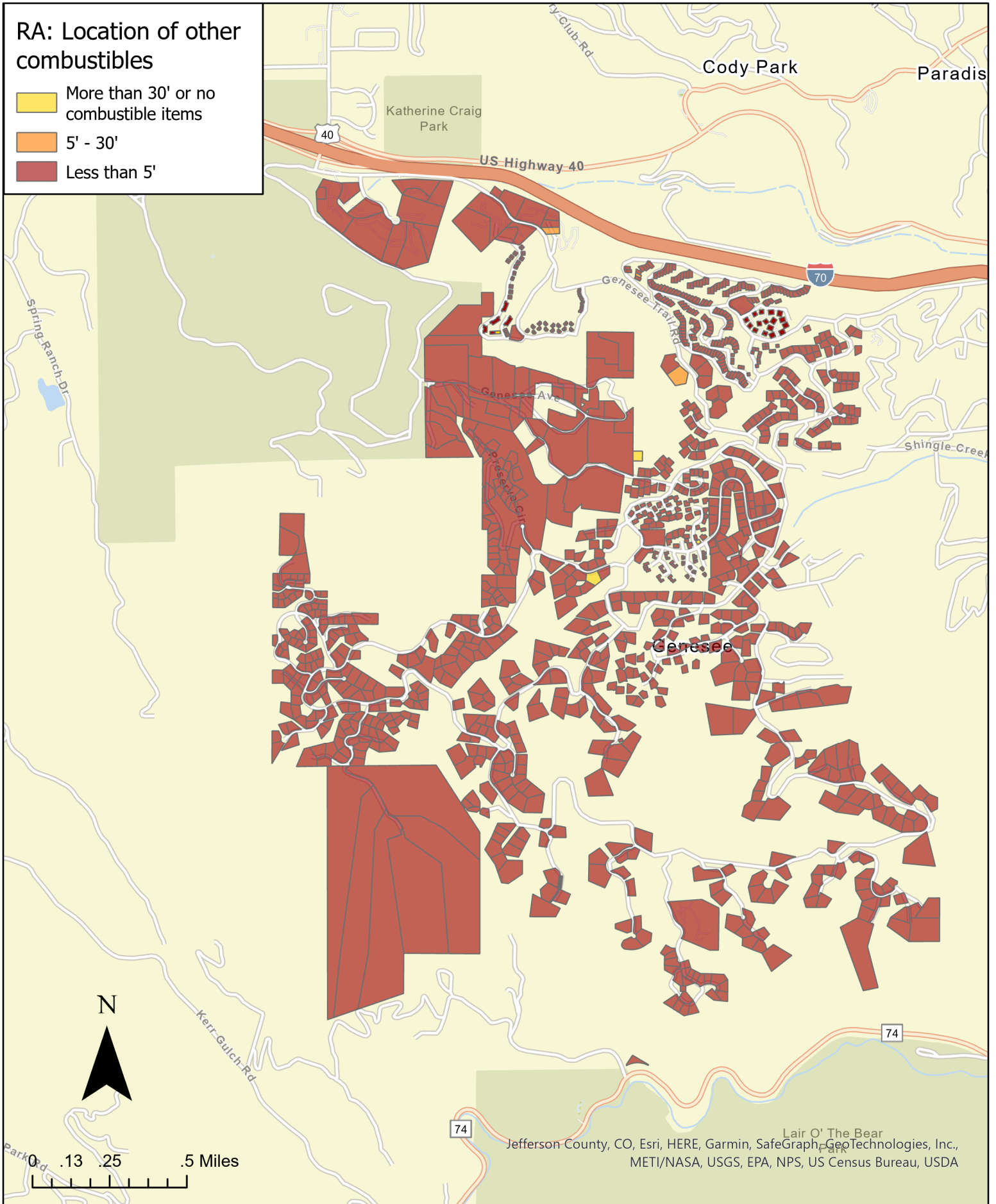


Jefferson County, CO, Esri, HERE, Garmin, SafeGraph, GeoTechnologies, Inc., METI/NASA, USGS, EPA, NPS, US Census Bureau, USDA


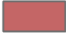


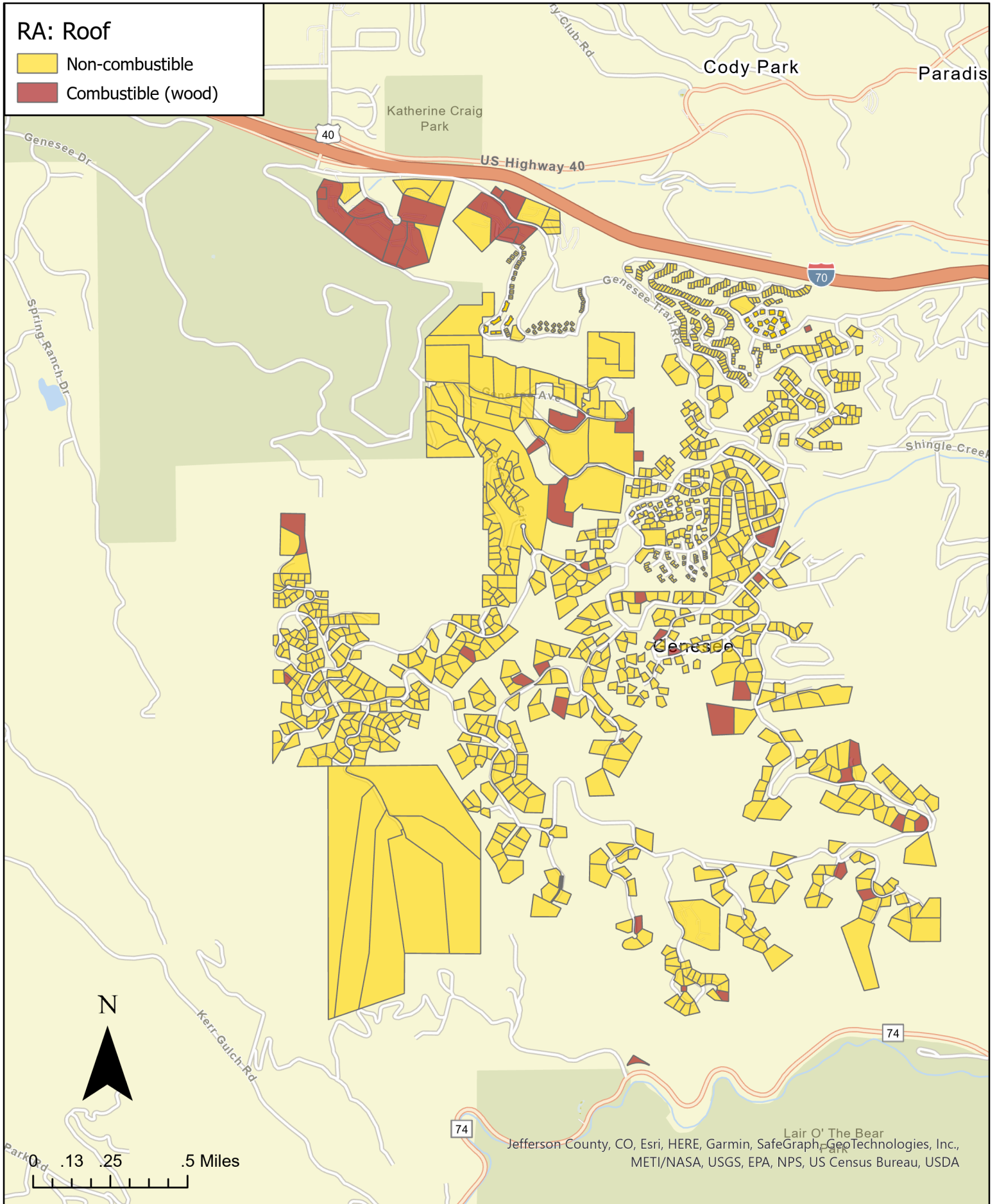
RA: Location of other combustibles

-  More than 30' or no combustible items
-  5' - 30'
-  Less than 5'






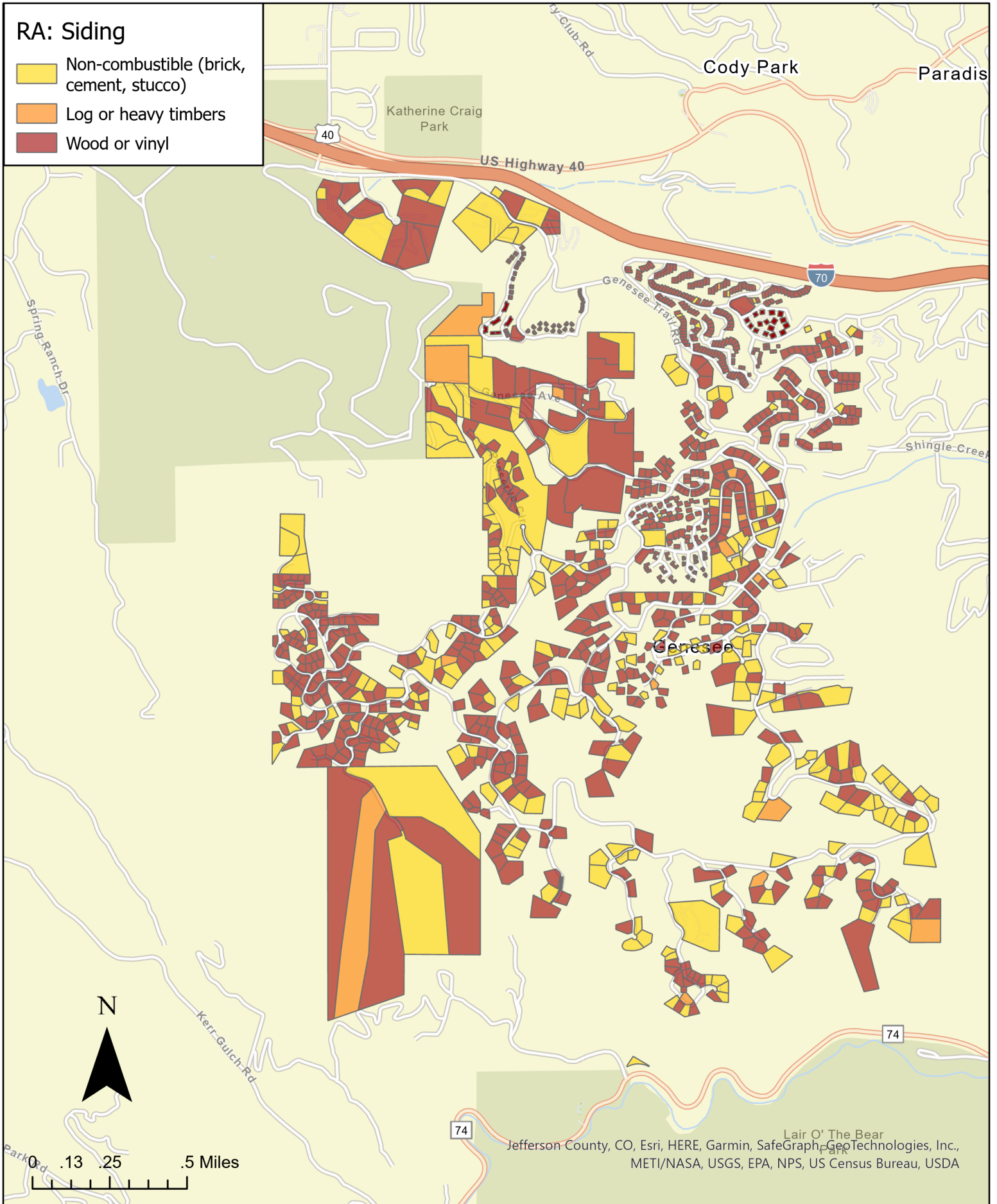
RA: Roof

-  Non-combustible
-  Combustible (wood)



RA: Siding

-  Non-combustible (brick, cement, stucco)
-  Log or heavy timbers
-  Wood or vinyl





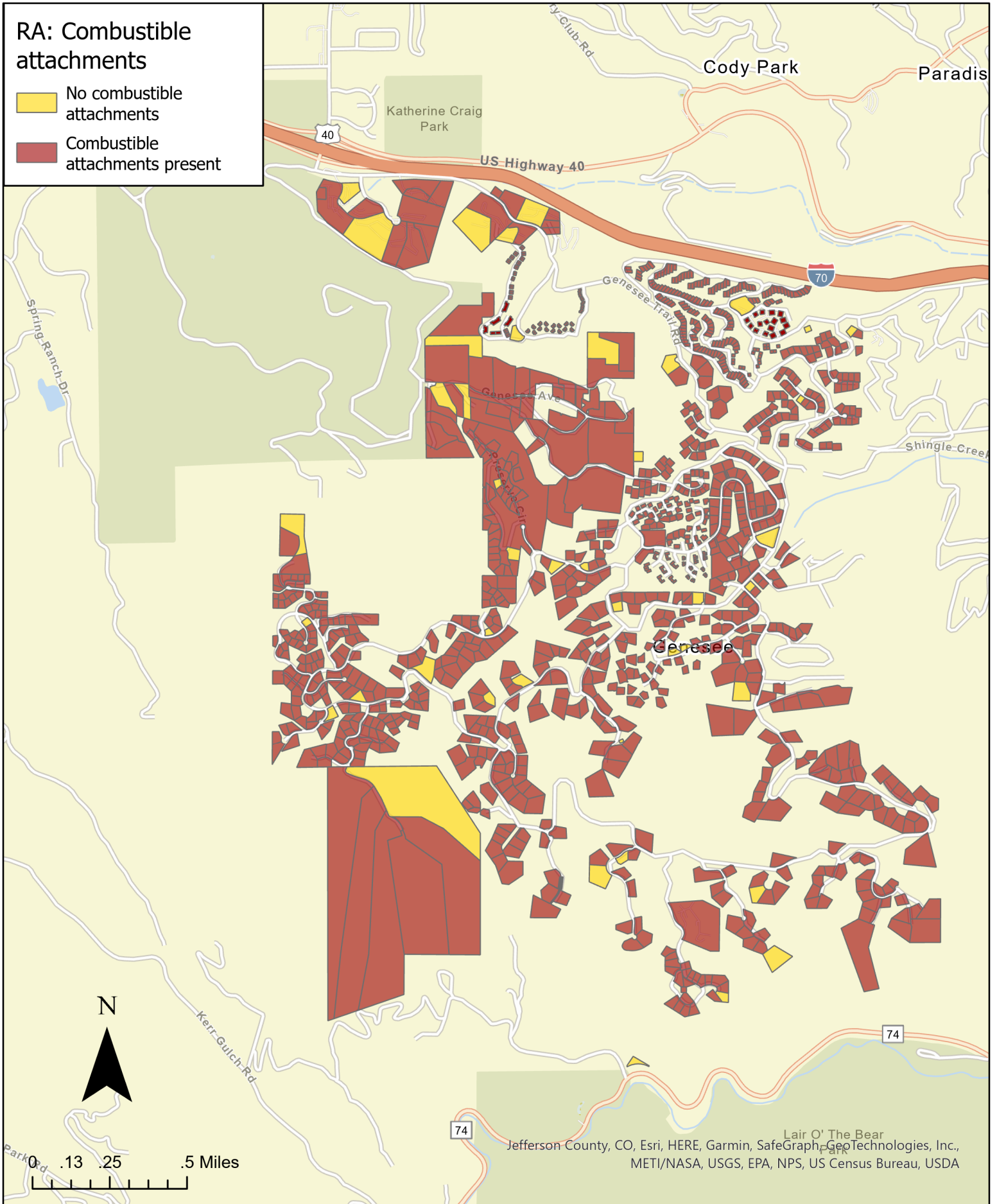
Jefferson County, CO, Esri, HERE, Garmin, SafeGraph, GeoTechnologies, Inc., METI/NASA, USGS, EPA, NPS, US Census Bureau, USDA



WiRē + Genesee Fire Rescue
Data collected in 2021
Map produced by The Wildfire Research Center (WiRē)

RA: Combustible attachments

-  No combustible attachments
-  Combustible attachments present



RA: Proximity to adjacent home

- More than 100'
- 30' to 100'
- 10' to 29'
- Less than 10'

